

**PNC**

962000113

**ML**

01

**Model**

P 46-450 C

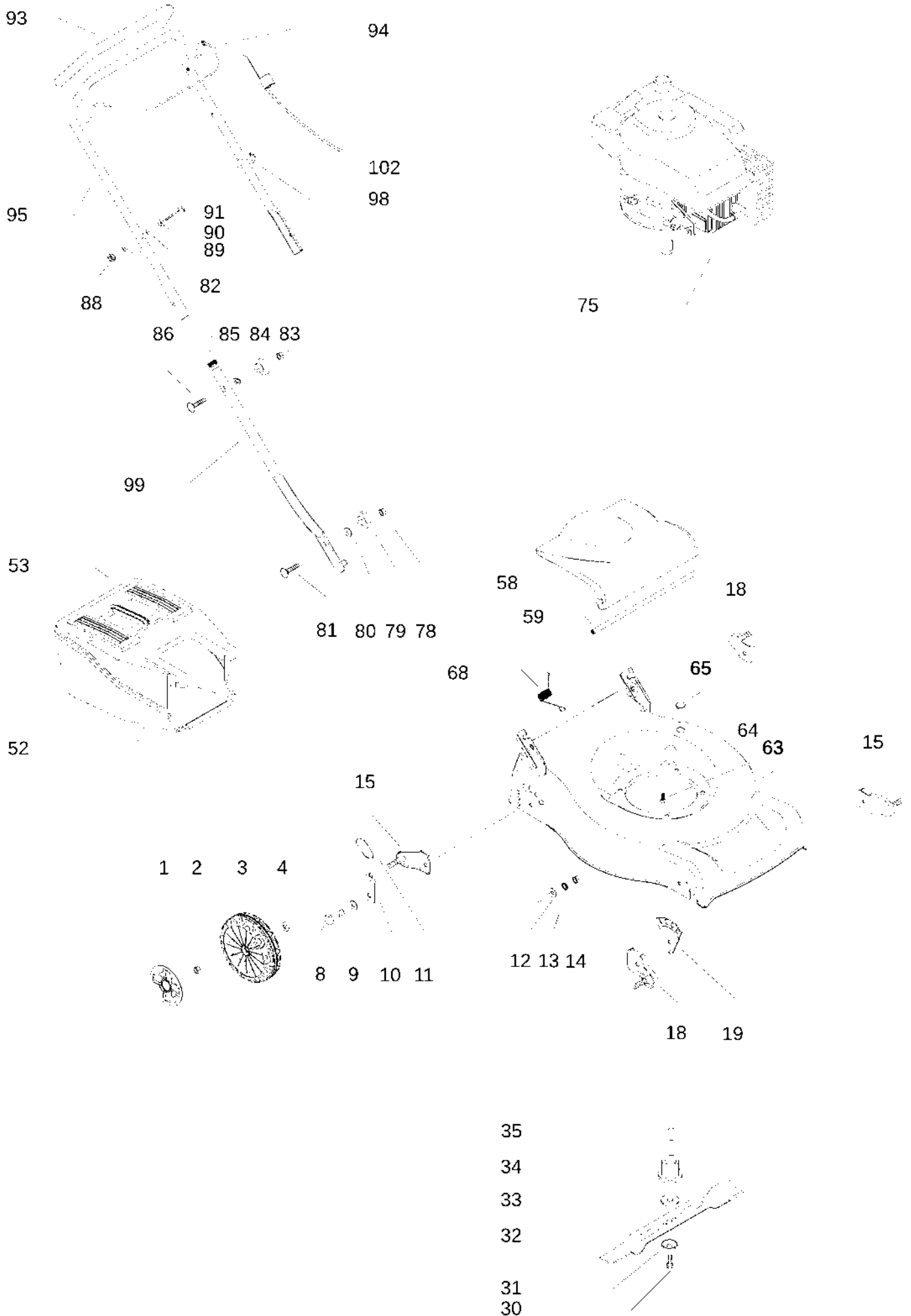
**Brand**

Partner

**Number of Pages 1 of 4**

<b>Factory:</b>	<b>IIQ - Valmadrera</b>	<b>Product Group:</b>	<b>OP 93</b>
<b>Publication Number:</b>	<b>AIPL2009_V36000001</b>	<b>Petrol Portable</b>	
<b>Publication Date:</b>	<b>01/09/09</b>	<b>Sub Group</b>	<b>1071</b>

HUSQVARNA OUTDOOR PRODUCTS ITALIA SPA



## HUSQVARNA OUTDOOR PRODUCTS ITALIA SPA

Item	PN	Description	Qty	Item	PN	Description	Qty
1	504 54 17-04	wheel cover Ø170	4	95	531 20 52-04	handle, upper half	1
2	504 85 78-01	nut	4	98	531 20 55-81	binder	2
3	505 43 58-01	wheel Ø170	4	99	531 20 60-71	handle, lower half	2
4	505 22 74-01	washer	4	102	531 20 60-26	brake cable	1
8	531 20 49-12	screw M10x26.4	4				
9	531 20 66-43	washer	4				
10	531 21 24-57	wheel regulator lever	4				
11	531 20 79-86	sheating	4				
12	531 20 79-89	washer	4				
13	531 20 89-74	washer	4				
14	531 20 79-78	nut M10x26.4	4				
15	504 85 16-01	wheel's support	2				
18	504 85 15-01	wheel's support	2				
19	531 21 29-87	wheel lever support	2				
30	531 20 80-08	screw, 3/8"	1				
31	531 20 72-37	spring washer	1				
32	531 21 10-17	mulching blade	1				
33	531 20 72-43	washer	1				
34	531 20 72-42	blade support	1				
35	505 29 09-01	key	1				
52	531 20 83-13	sack, lower half	1				
53	531 20 82-96	sack, upper half	1				
58	531 21 26-46	safety flap	1				
59	531 20 50-60	bar, safety flap	1				
63	531 21 35-60	deck	1				
64	531 21 28-51	screw 3/8" + split washer	3				
65	531 20 53-18	cap	1				
68	531 20 59-99	spring	1				
75	———	engine, Briggs & Stratton, model number 09T5022229	1				
78	531 20 79-82	nut M8	2				
79	531 20 49-23	knob	2				
80	531 20 49-22	washer	2				
81	531 20 49-21	screw M8x25	2				
82	531 20 89-50	cap	2				
83	531 20 79-82	nut M8	2				
84	531 20 49-23	knob	2				
85	531 20 70-90	washer	2				
86	531 20 70-89	screw M8x50	2				
88	531 20 84-91	nut M6 self	1				
89	531 20 49-61	washer	2				
90	531 20 71-65	nut M6	1				
91	531 20 51-69	starter cable guide	1				
93	531 20 59-89	handle sheat	1				
94	531 21 14-29	brake lever	1				